

RMC FloodGuard™

Scope of Use / Specification Sheet

The RMC FloodGuard valve is designed to allow water to flow normally until such time it detects an excessive flow rate. The valve then shuts off automatically until it is reset.



FGX01

Product List

Product Code	Size
FGX01	15mm
FGX02	20mm

Applications

The RMC 15mm FloodGuard is designed to reduce the extent of flooding and water damage caused from a burst flexible hose, and is a male/female configuration.

The RMC 20mm FloodGuard valve is designed for quick and easy installation of appliances such as washing machines and dishwashers. They are a male/female configuration for ease of installation.

FloodGuard is intended to be fitted inline between the isolating tap and the hose connection to the fixture.

If the valve closes and does not reset, close the tap, slowly unscrew the valve until water pressure is relieved then reinstall the valve.

Materials

Body	LF DZR Brass
Spring	Stainless Steel
O-Ring	Nitrile
Internal Components	PSU

Features and Benefits

- Designed in Australia
- Reliable design with over 10 years proven track record
- Suitable for horizontal and vertical installation
- Quick and easy installation
- Ideal for retrofit installations

Technical Specifications

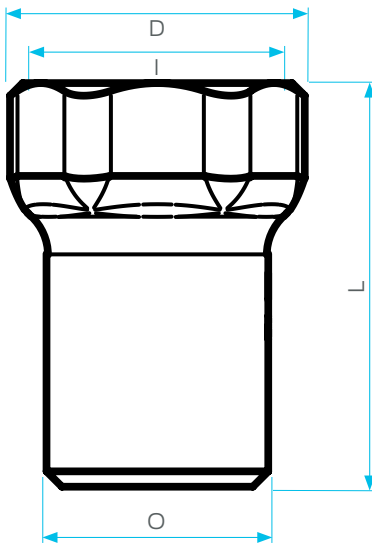
	15mm	20mm
Minimum Water Supply Pressure	200kPa	200kPa
Maximum Water Supply Pressure	1000kPa	1000kPa
Maximum Water Temperature	85°C	85°C
Shut Off Flow Rate	15.0 ± 1.5 L/min	19.0 ± 1.9 L/min
Inlet (tap) Connection	15mm G½" Female	20mm G¾" Female
Outlet (hose) Connection	15mm G½" Male	20mm G¾" Male

FloodGuard

Dimensions

Code	Length	Diameter	Inlet	Outlet
FGX01	38	28	G1/2"	G1/2"
FGX02	36	33	G3/4"	G3/4"

Note: All measurements in mm unless otherwise stated.



Notes

If the valve shuts under normal operating conditions, this is due to excessive supply pressure above 1000kPa. To correct this, install a HydroSave Inline Flow Controller immediately downstream of the flexible hose. The FloodGuard will not prevent any small leaks or drips. It is designed to function only in hose burst situations.

Scope of Use

Installation is subject to the requirements of the applicable regulatory authority, the National Construction Code Volume Three – Plumbing Code of Australia, associated reference standards as applicable at the time and AS/NZS 3500. This product is compliant to the Lead Free requirements of the National Construction Code Volume Three. For more information, please visit www.rmc.com.au/resources.

Warranty

Reliance Worldwide Corporation (Aust.) Pty. Ltd. (RWC) will either replace or repair any defective goods where the defect arose as a result of manufacture within the warranty period. You may contact RWC at the phone number, address or e-mail shown below for further information or to make a claim.

Visit www.rmc.com.au/warranty to view the warranty statement in full and for further important information.

Standards and Approvals



WMTS-479
WMK26329